



£550 pcm

1 Bedroom House of Multiple Occupation to rent
Room 1 29 Ingles Drive, Worcester





Overview

Ground Floor room ,with French doors into the Garden and personal sink in this Furnished Room in Professional shared House, Single Occupancy. All bills included, council tax, gas central heating. Super Fast Wi Fi



Key Features

- Double room , all bills included
- French doors into patio and garden
- Super fast Wi fi
- Close to Worcester City / St. John's Shops
- Ample Parking on street
- Large communal Lounge and Dining room with full height Juliette balconies
- Separate Utility room with washing machine & tumble dryer
- Gas Central Heating



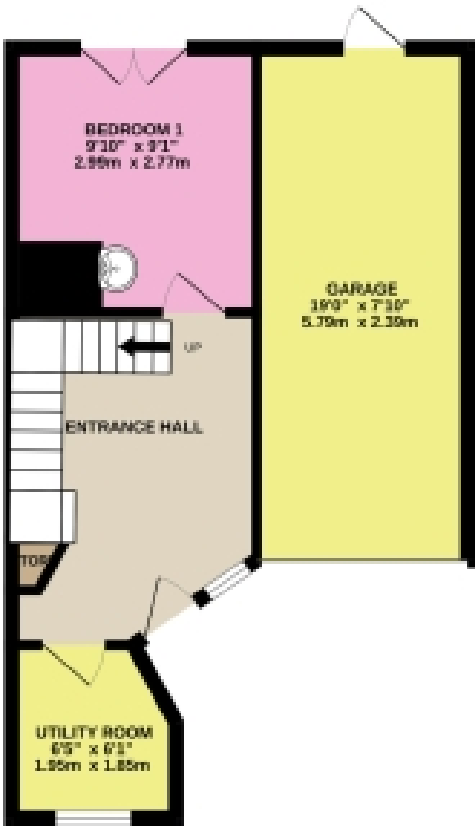
Ground Floor room, in modern house with French doors into the Garden and sink in this Furnished Room in Professional shared House, Single Occupancy. All bills included, council tax, gas central heating. Super Fast Wi Fi Are Ewe looking for a fabulous shared house near to the centre of the City?

Just off the main road in the St. John's area of Worcester , you will find this great house share. Four other people are in the house and the bathroom and cloakroom is shared with 3 other people. This room is furnished with a double bed, bedside cabinet, wardrobe, and drawers.

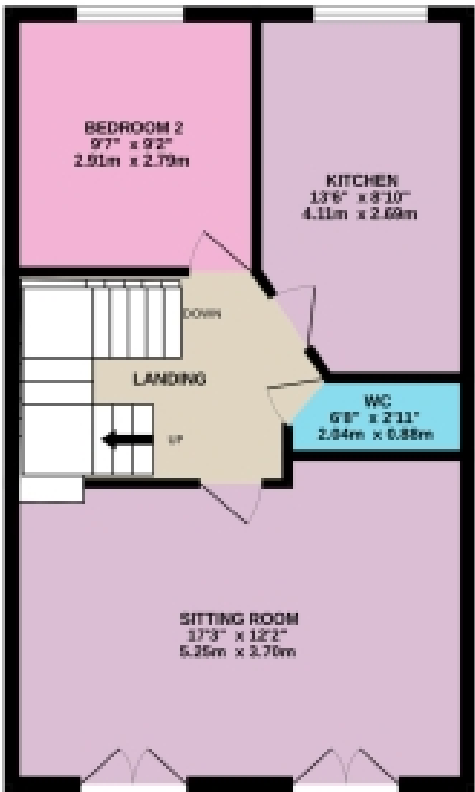


Floorplans

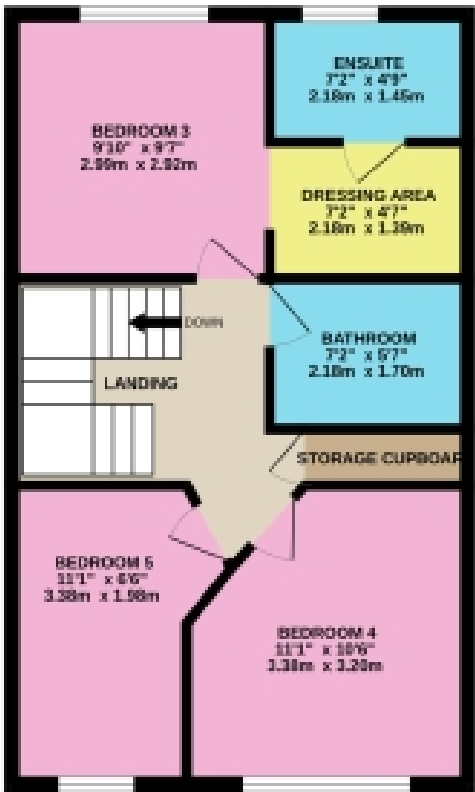
GROUND FLOOR
372 sq.ft. (34.6 sq.m.) approx.



1ST FLOOR
484 sq.ft. (44.9 sq.m.) approx.



2ND FLOOR
484 sq.ft. (44.9 sq.m.) approx.

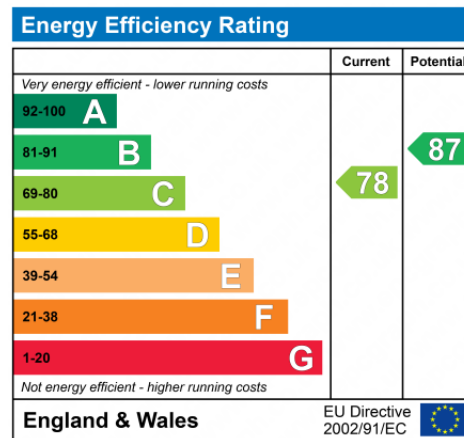


5 BEDROOM HMO

TOTAL FLOOR AREA : 1340 sq.ft. (124.5 sq.m.) approx.

Whilst every attempt has been made to ensure the accuracy of the floorplan contained here, measurements of doors, windows, rooms and any other items are approximate and no responsibility is taken for any error, omission or mis-statement. This plan is for illustrative purposes only and should be used as such by any prospective purchaser. The services, systems and appliances shown have not been tested and no guarantee as to their operability or efficiency can be given.
Made with Metapix ©2023







Marketed by Ewemove Worcester East

01905 967991 (24/7)
worcestereast@ewemove.com

